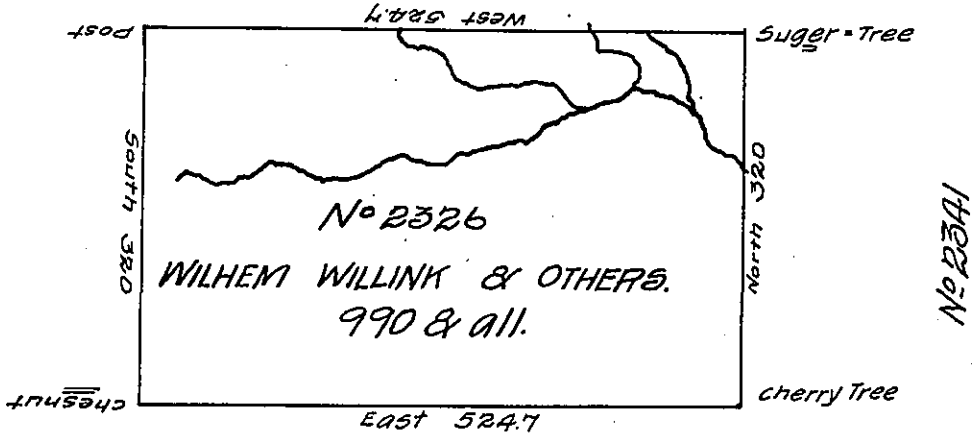


271-142
No 2333



No 2425

Situate on the Lefthand Branch of Sinamahoning Creek about ten Miles above the Driftwood in North^d County containing 990 Acres and the Usual allowance for Roads &c. Surveyed July 29th 1793 for Wilhem Willink and others in persewance of a Warrant No 2326 bearing date December 12th 1792
 Daniel Brodhead Esq^r S. G.

IN TESTIMONY that the above is a copy of the original remaining on file in the Department of Internal Affairs of Pennsylvania, made conformably to an Act of Assembly approved the 16th day of February, 1833, I have hereunto set my Hand and caused the Seal of said Department to be affixed at Harrisburg, this twelfth day of June 1907

Henry Howell
 Secretary of Internal Affairs.